

3. Wheelchair : NEXT-51B

Manual type

3D adjustable sheet

Able to swing and adjustable height of wing arm

Swing in-out, removable and adjustable Leg-support

Adjustable height



**GOOD DESIGN
AWARD 2014**

The structure is made from aluminum.

Strong and lightweight.

Rear wheels are solid rubber tires.

Made from "Polymer".

- Size M : 22 inch. / Size L : 24 inch.

Front wheels are solid hybrid tires.

Made from "Poly Urethane".

- Size M : 6 inch. / Size L : 7 inch.

Drum brakes and hand brakes.

The cushions made from Nylon and Vinyl.

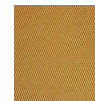
Removable to clean.

- Size M : Width 40 cm. / Size L : Width 46 cm.

Maximum weight support : 130 kg.

Wieght : Size M =15.6 / Size L = 16.6 kg.

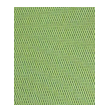
NYLON



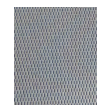
F-1
Orange



F-2
Blue



F-3
Green



F-4
Gray

VINYL



B-61
Orange



B-64
Blue



MATSUNAGA