

# Wheelchair : NEXT-11B

1

Manual type

3D adjustable sheet

Adjustable Leg-support



**GOOD DESIGN  
AWARD 2013**

The structure is made from aluminum.

Strong and lightweight.

Rear wheels are solid rubber tires.

Made from "Polymer".

- Size M : 22 inch. / Size L : 24 inch.

Front wheels are solid hybrid tires.

Made from "Poly Urethane".

- Size M : 6 inch. / Size L : 7 inch.

Dram brakes and hand brakes.

The cushions made from Nylon and Vinyl.

Removable to clean.

- Size M : Width 40 cm. / Size L : Width 46 cm.

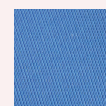
Maximum weight support : 130 kg.

Weight : Size M = 11.8 / Size L = 12.8 kg.

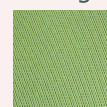
## NYLON



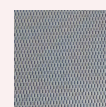
F-1  
Orange



F-2  
Blue



F-3  
Green



F-4  
Gray



**MATSUNAGA**